



Start Here ▶▶

Connect your TiVo® DVR and activate the TiVo® service

Welcome!

Activating and connecting your TiVo Digital Video Recorder (DVR) is easy. Just follow the numbered steps on this poster. After connecting, complete on-screen Guided Setup to customize the DVR for your home. See the *Viewer's Guide* for additional setup examples and help.

1 Activate the TiVo® service

To activate the TiVo service, visit www.tivo.com/activate or call TiVo Customer Support at 1-877-367-8486.

You'll need your 15-digit TiVo Service Number, found on the label on the back of the DVR.

Write it here for reference _____

2 Get to know your cables (don't worry if you don't use all of them)

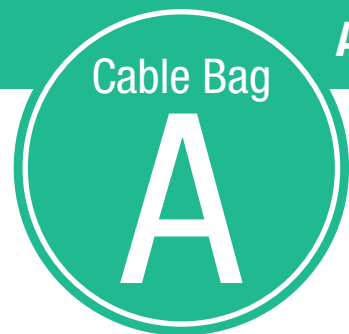
<p>Cable Bag A</p> <p>Audio & Video (sound & pictures), Phone, and Power</p> <ul style="list-style-type: none"> Composite A/V cable for stereo audio (red & white ends) and video (yellow end) Coaxial cable Phone cord Phone splitter Power cord 	<p>Cable Bag B</p> <p>Channel Changing</p> <p>If you have a cable or satellite box, the DVR uses one of these cables to change channels. Turn this poster over for instructions.</p> <ul style="list-style-type: none"> IR cable (works with any cable or satellite box) Serial cable (works with some DIRECTV® satellite receivers and Motorola/General Instruments DCT2000 series digital cable boxes.)
--	---

3 Do you have a satellite or cable box?

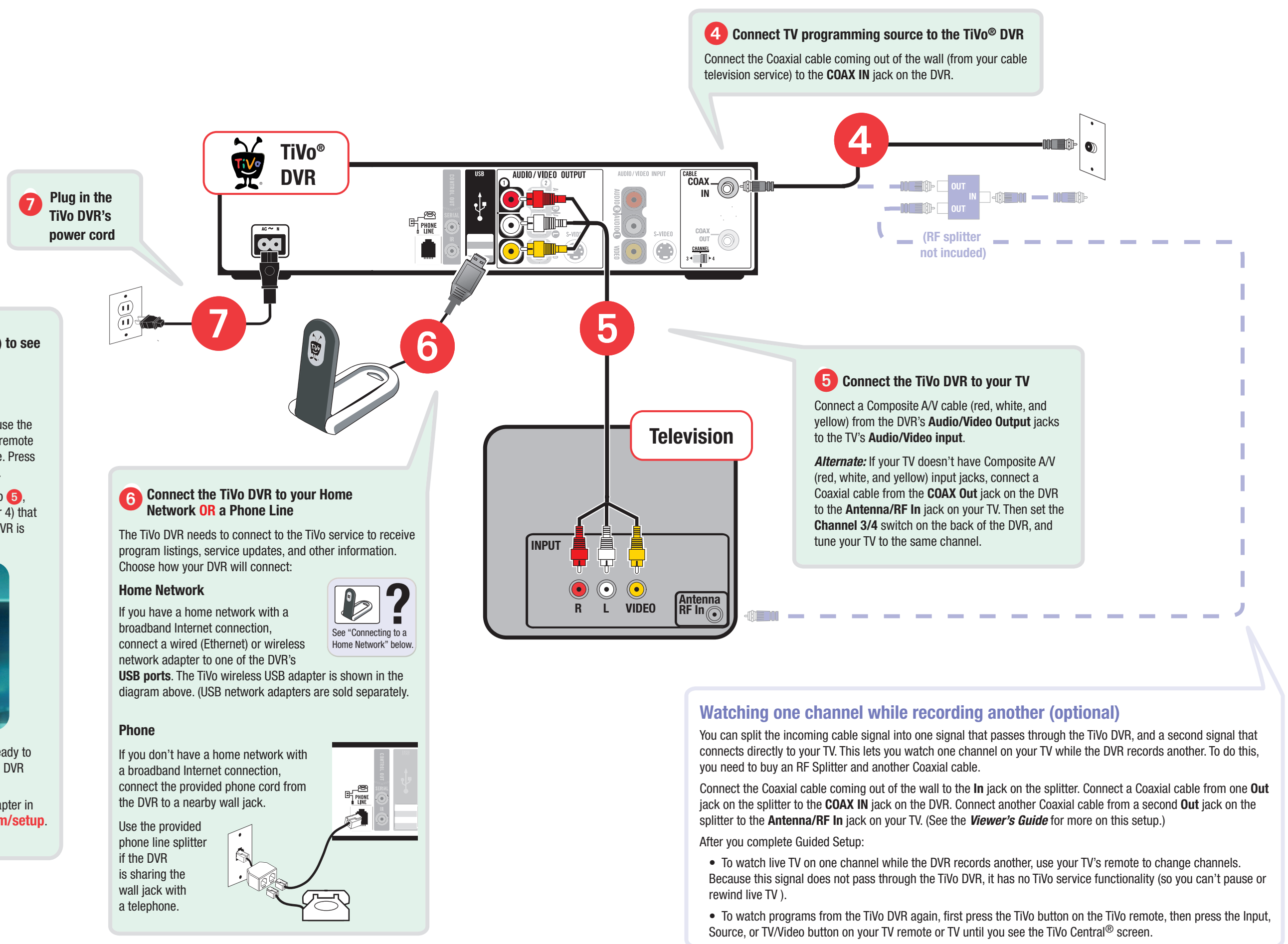
- Yes** I have a satellite or cable box — Turn this poster over. Continue with step 4 on the other side.
- No** I don't have a satellite or cable box — Use this side. Continue with step 4 below.

Setup for Cable (no cable box) – Use cable bag A only

▶ If you have a cable box or satellite box, turn this poster over



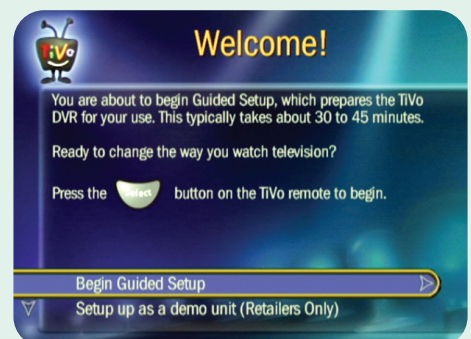
Audio & Video (sound & pictures), Phone and Power



8 Tune your TV (if necessary) to see the Welcome screen

Turn on your TV.
Tip: If you do not see the Welcome screen, use the Input, Source, or TV/Video button on your TV remote or TV to select the correct audio/video source. Press the button until you see the Welcome screen.

Alternate: If you used a Coaxial cable in Step 5, tune your TV to the same channel (either 3 or 4) that the **Channel 3/4** switch on the back of the DVR is set to.



When you see the Welcome screen, you're ready to begin **Guided Setup**, which customizes the DVR for your home.
If you need help, see the Troubleshooting chapter in the *Viewer's Guide* or visit www.tivo.com/setup.

Watching one channel while recording another (optional)
You can split the incoming cable signal into one signal that passes through the TiVo DVR, and a second signal that connects directly to your TV. This lets you watch one channel on your TV while the DVR records another. To do this, you need to buy an RF Splitter and another Coaxial cable.
Connect the Coaxial cable coming out of the wall to the **In** jack on the splitter. Connect a Coaxial cable from one **Out** jack on the splitter to the **COAX IN** jack on the DVR. Connect another Coaxial cable from a second **Out** jack on the splitter to the **Antenna/RF In** jack on your TV. (See the *Viewer's Guide* for more on this setup.)
After you complete Guided Setup:
• To watch live TV on one channel while the DVR records another, use your TV's remote to change channels. Because this signal does not pass through the TiVo DVR, it has no TiVo service functionality (so you can't pause or rewind live TV).
• To watch programs from the TiVo DVR again, first press the TiVo button on the TiVo remote, then press the Input, Source, or TV/Video button on your TV remote or TV until you see the TiVo Central® screen.

Connecting to a Home Network

You'll get more from the TiVo® service!

The TiVo service includes more than just recording TV programs. When you connect your TiVo DVR to a home network, you'll enjoy these cool features:

TiVoToGo™ Transfers – Transfer recordings from your DVR to your laptop and take them with you.

Home Network Applications – Access a variety of fun and informative applications delivered over your broadband Internet connection.

Music & Photos – Play MP3s and view slideshows of digital photos stored on your PC.

To learn more, check out the Home Media Features Guide at www.tivo.com/guides.

Wired or Wireless: It's your choice!

You can connect your TiVo DVR to a wireless or wired (Ethernet) home network.

Ethernet connections are generally faster, and less susceptible to interference than wireless networks.

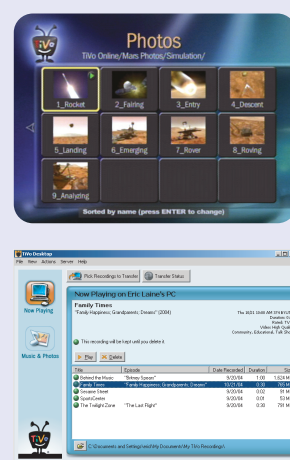
Wireless connections are considered more convenient because they don't require running cables between devices. The setup diagrams on this poster show the TiVo® wireless USB adapter, available at www.tivo.com/store.

Check out the complete list of compatible network adapters at www.tivo.com/adapters.

The TiVo® DVR is ready when you are.

You can connect your TiVo DVR to a home network at any time. Consult the *Viewer's Guide* for instructions, or visit www.tivo.com/getready.

IMPORTANT: If you're not ready to connect to a home network now, you must connect your TiVo DVR to a phone line using the provided phone cord. The DVR needs to connect to the TiVo service to complete Guided Setup, and to receive program listings and other information.



Need some help?

I don't see the Welcome screen.

- **Make sure all cables are connected from the OUT jack of one device to the IN jack of the next. Never connect OUT to OUT or IN to IN.**
- If you used a Coaxial RF cable to connect your DVR to your TV, make sure your TV is tuned to the same channel (3 or 4) that you selected on the back of your DVR (using the channel 3/4 switch).
- Make sure your TV is displaying the appropriate video source. You may need to use the Input, Source, or TV/Video button on your TV's remote to change video sources. If you are having trouble changing the video source, refer to your TV owner's manual.
- If you connected the DVR to an A/V receiver or home theater system, and you are having trouble finding the correct input, try connecting it directly to the TV instead.

My TiVo remote isn't working.

- Notice the red light above the TiVo button on the remote. If the red light does not flash when you press any button, try replacing the batteries.
- Do lights on the front of the TiVo DVR seem to respond (i.e., blink or flash) when you press any button on the remote? If lights on the front of the DVR do not respond to the remote, restart your DVR by unplugging it, waiting 15 seconds, then plugging it back in.
- See the inside front cover of the *Viewer's Guide* for more about the TiVo remote.

I don't have cable or satellite TV.

- This TiVo box is designed to receive television signals from cable or satellite only and not for over-the-air television reception via antenna.

Check out the Troubleshooting chapter in the *Viewer's Guide* for more help with connecting your TiVo DVR, completing Guided Setup, and using the TiVo service. Visit www.tivo.com/support to find Installation Self-Help, Frequently Asked Questions, step-by-step troubleshooting, and to get interactive help from expert users.

www.tivo.com/support

Setup for a Cable Box or Satellite Box – Use cable bags **A** & **B**

► If you don't have a cable box or satellite box, turn this poster over

Audio & Video (sound & pictures), Phone and Power

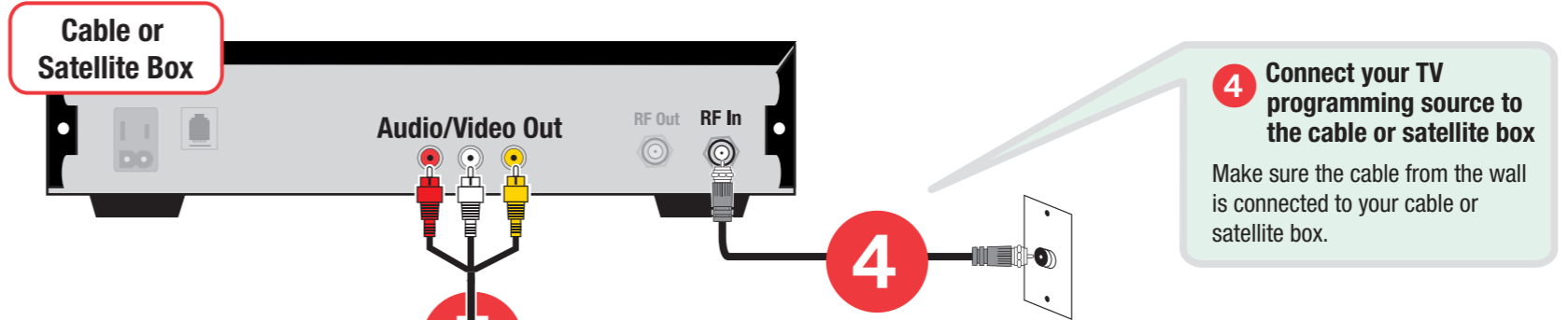
Cable Bag

A

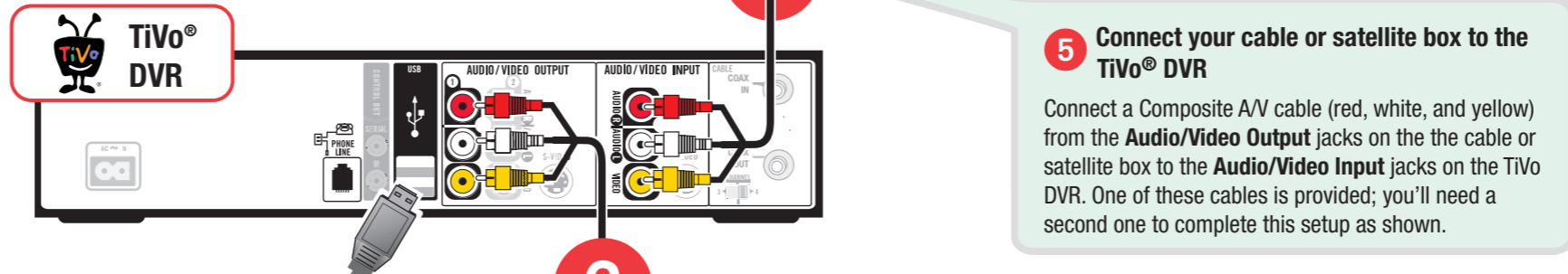
Cable Bag

B

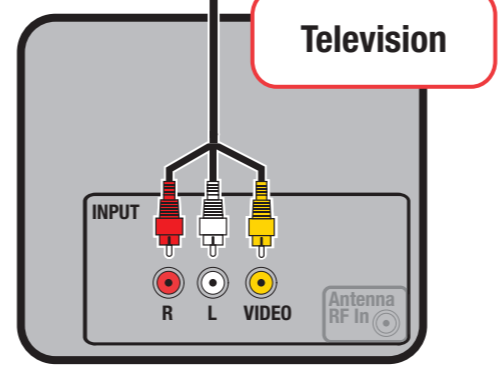
Channel Changing (Serial or IR control)



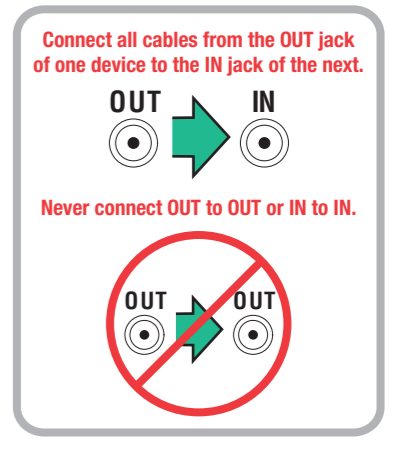
4 Connect your TV programming source to the cable or satellite box
Make sure the cable from the wall is connected to your cable or satellite box.



5 Connect your cable or satellite box to the TiVo® DVR
Connect a Composite A/V cable (red, white, and yellow) from the Audio/Video Output jacks on the cable or satellite box to the Audio/Video Input jacks on the TiVo DVR. One of these cables is provided; you'll need a second one to complete this setup as shown.



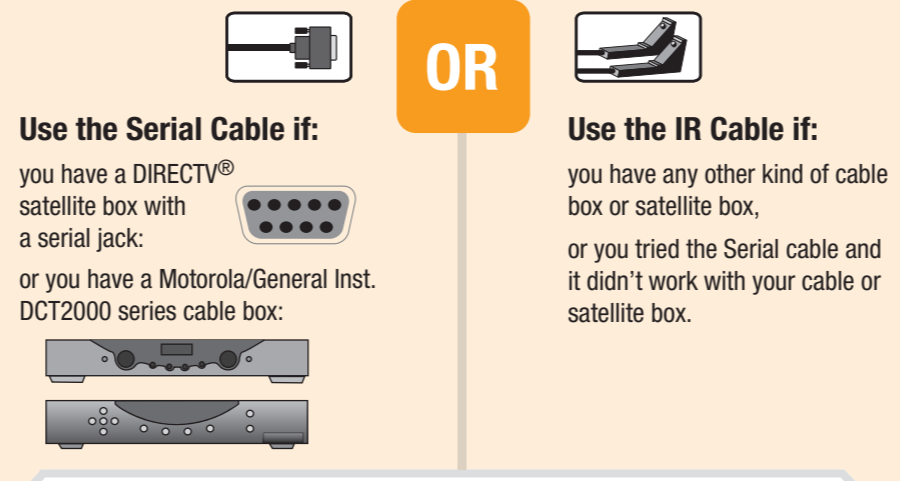
6 Connect the TiVo DVR to your TV
Connect a Composite A/V cable (red, white, and yellow) from the DVR's Audio/Video Output jacks to the TV's Audio/Video input.
Alternate: If your TV doesn't have Composite A/V (red, white, and yellow) input jacks, connect a Coaxial cable from the RF Out jack on the DVR to the Antenna/RF In jack on your TV. Then set the Channel 3/4 switch on the back of the DVR, and tune your TV to the same channel.



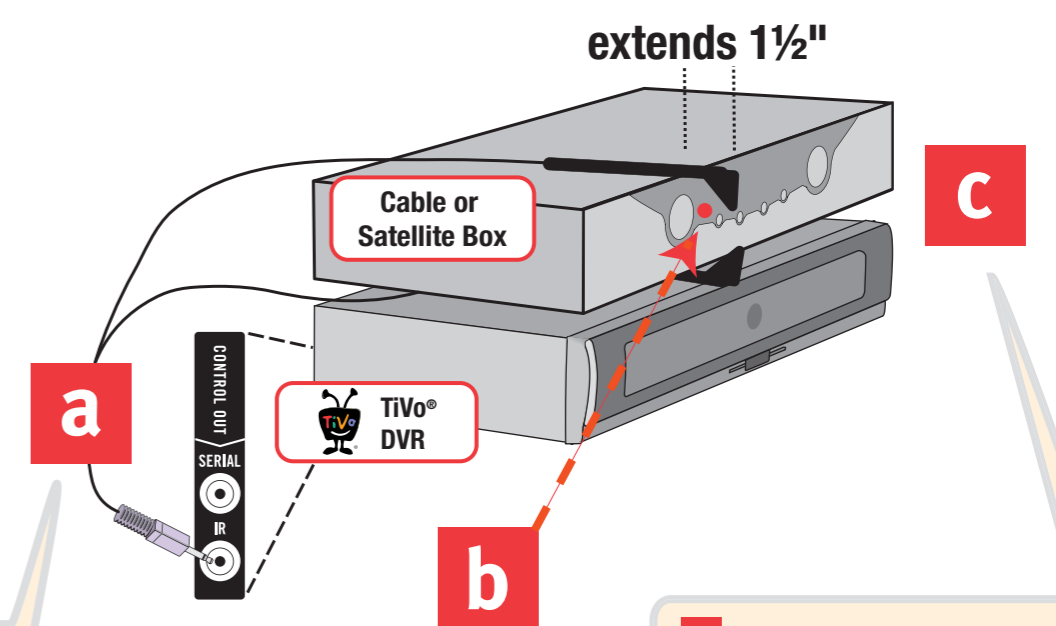
7 Connect the TiVo DVR to your Home Network OR a Phone Line
The TiVo DVR needs to connect to the TiVo service to receive program listings, service updates, and other information. Choose how your DVR will connect:
Home Network
If you have a home network with a broadband Internet connection, connect a wired (Ethernet) or wireless network adapter to one of the DVR's USB ports. The TiVo wireless USB adapter is shown here. (USB network adapters are sold separately. Visit www.tivo.com.)
Phone
If you don't have a broadband Internet connection, connect the provided phone cord from the DVR to a nearby wall jack.
Use the provided phone line splitter if the DVR is sharing the wall jack with a telephone or with your cable or satellite box.



8 Choose a Channel Changing cable
The DVR uses one of the provided channel changing cables to change channels on your cable or satellite box. Choose one cable from cable bag **B**.



Connecting the IR cable

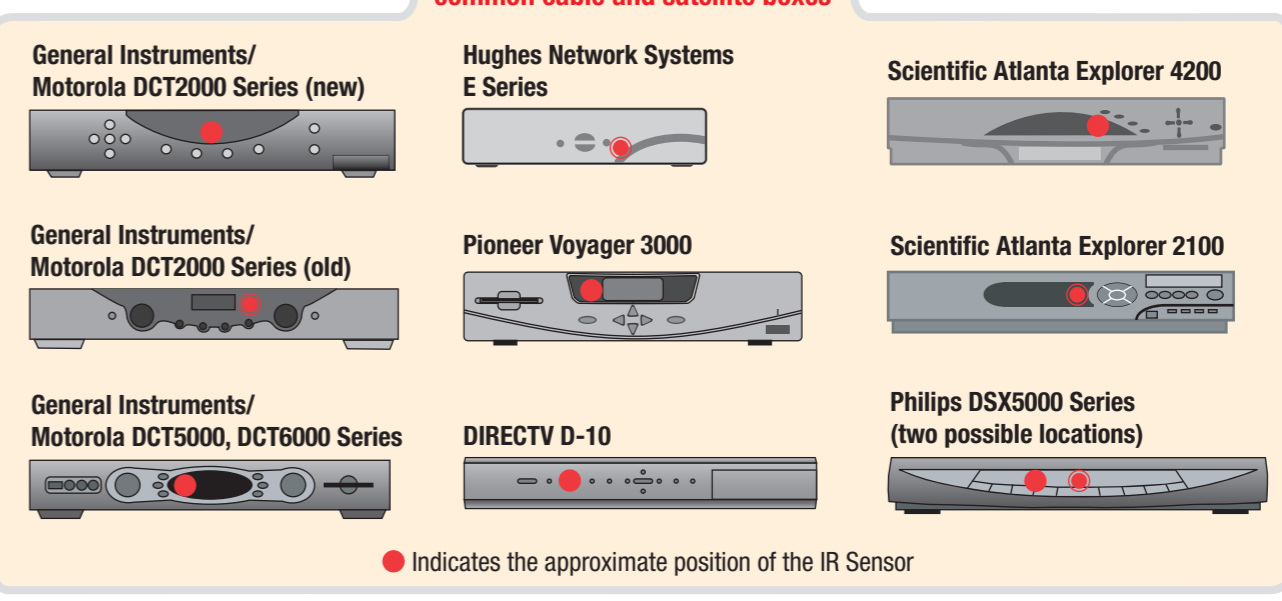


a Plug the purple end of the IR cable into the back of the TiVo DVR
If you're not using the Serial cable, plug the purple end of the IR cable into the Control Out/IR jack (the lower control jack) on the back of the TiVo DVR as shown.

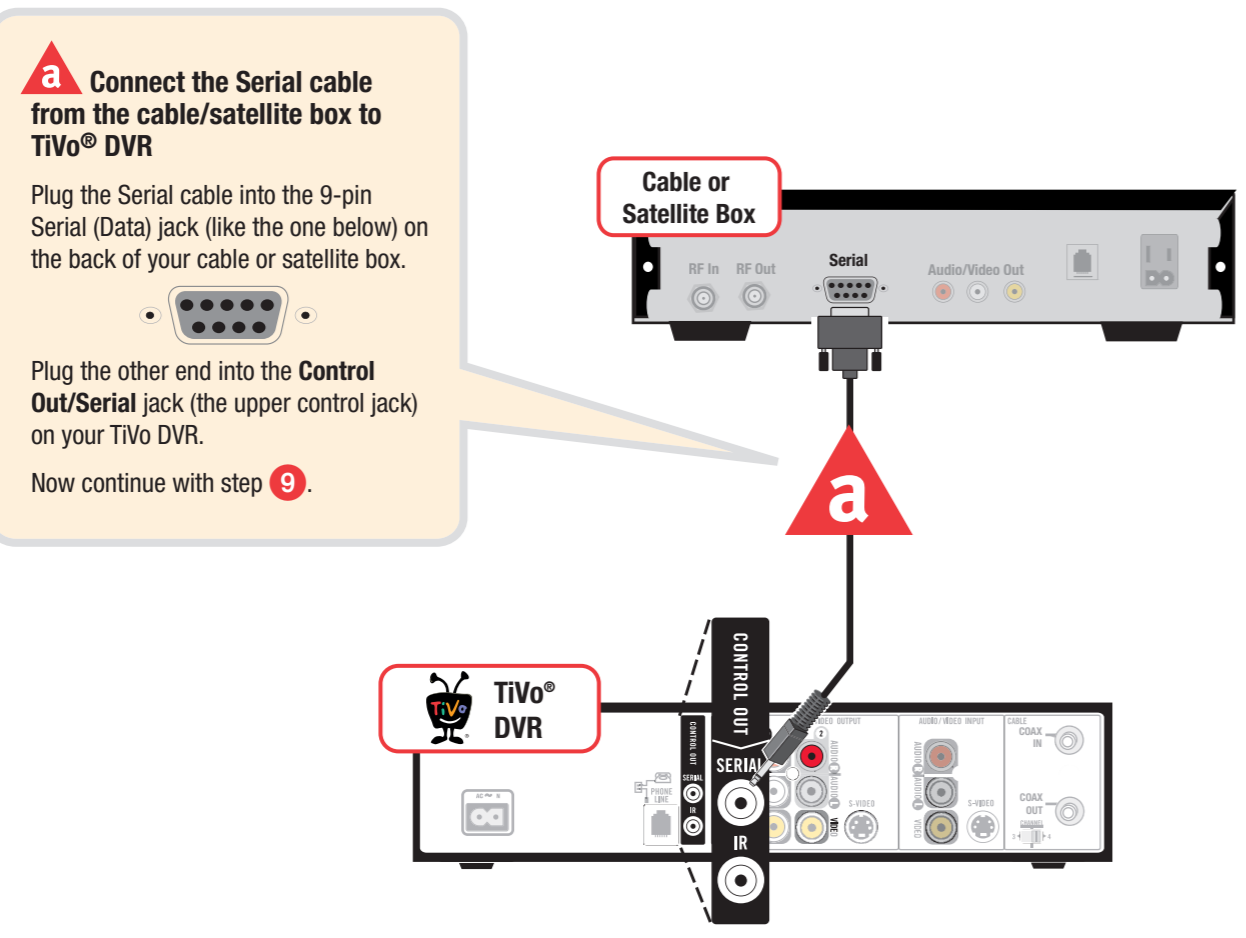
b Locate the IR sensor on your cable or satellite box
The IR cable's emitters beam channel change signals to the IR sensor on your cable or satellite box—just like a remote control does.
Locate the IR sensor on the front of your cable or satellite box. It's a tiny round bulb; if you shine a flashlight into the dark plastic "window," you can see it.

c Place IR emitters on the front of the cable or satellite box
Place the emitters in front of the IR sensor (one on top of the box and one on bottom). Be sure both emitters stick out about 1 1/2 inches directly in front of the IR sensor. Then use the adhesive strips provided to keep them in place. Now continue with step **9**.

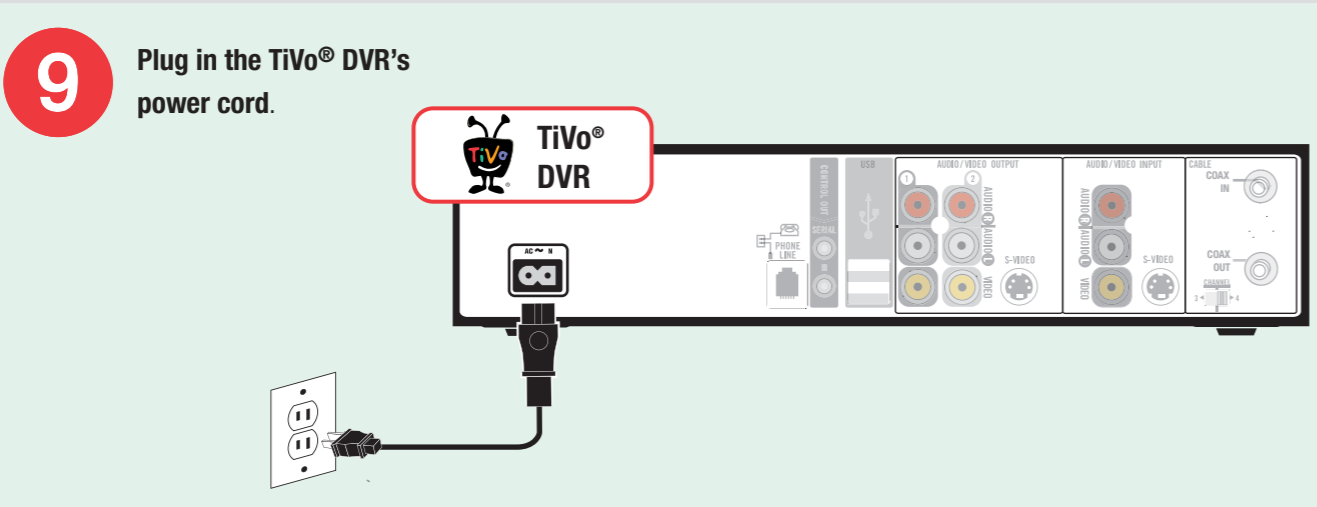
Finding the IR Sensor on some common cable and satellite boxes



Connecting the Serial cable



a Connect the Serial cable from the cable/satellite box to TiVo® DVR
Plug the Serial cable into the 9-pin Serial (Data) jack (like the one below) on the back of your cable or satellite box.
Plug the other end into the Control Out/Serial jack (the upper control jack) on your TiVo DVR.
Now continue with step **9**.



9 Plug in the TiVo® DVR's power cord.

10 Tune your TV (if necessary) to see the Welcome screen
Turn on your TV.
Tip: If you do not see the Welcome screen, use the Input, Source, or TV/video button on your TV remote or TV to select the correct audio/video source. Press the button until you see the Welcome screen.
Alternate: If you used a Coaxial RF cable in Step **6**, tune your TV to the same channel (either 3 or 4) that the Channel 3/4 switch on the back of the DVR is set to.
When you see the Welcome screen, you're ready to begin **Guided Setup**, which customizes the DVR for your home.
If you need help, see the Troubleshooting chapter in the *Viewer's Guide* or visit www.tivo.com/setup.

